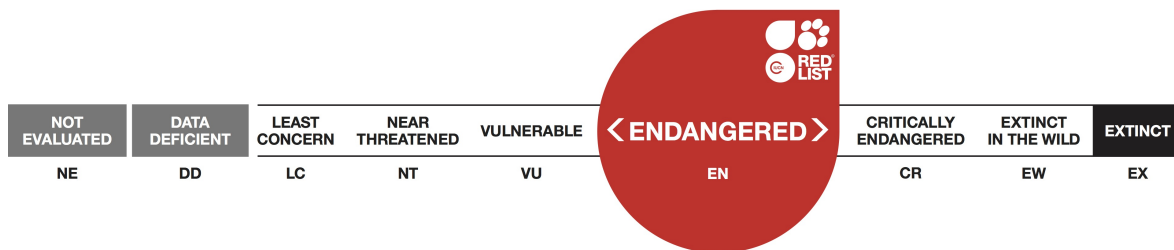


Cornu mazzullii

Assessment by: Falkner, G., Falkner, M. & von Proschwitz, T.



View on www.iucnredlist.org

Citation: Falkner, G., Falkner, M. & von Proschwitz, T. 2013. *Cornu mazzullii*. The IUCN Red List of Threatened Species 2013: e.T40099A10307823. <http://dx.doi.org/10.2305/IUCN.UK.2011-1.RLTS.T40099A10307823.en>

Copyright: © 2015 International Union for Conservation of Nature and Natural Resources

Reproduction of this publication for educational or other non-commercial purposes is authorized without prior written permission from the copyright holder provided the source is fully acknowledged.

Reproduction of this publication for resale, reposting or other commercial purposes is prohibited without prior written permission from the copyright holder. For further details see [Terms of Use](#).

The IUCN Red List of Threatened Species™ is produced and managed by the [IUCN Global Species Programme](#), the [IUCN Species Survival Commission \(SSC\)](#) and [The IUCN Red List Partnership](#). The IUCN Red List Partners are: [BirdLife International](#); [Botanic Gardens Conservation International](#); [Conservation International](#); [Microsoft](#); [NatureServe](#); [Royal Botanic Gardens, Kew](#); [Sapienza University of Rome](#); [Texas A&M University](#); [Wildscreen](#); and [Zoological Society of London](#).

If you see any errors or have any questions or suggestions on what is shown in this document, please provide us with [feedback](#) so that we can correct or extend the information provided.

Taxonomy

Kingdom	Phylum	Class	Order	Family
Animalia	Mollusca	Gastropoda	Stylommatophora	Helicidae

Taxon Name: *Cornu mazzullii* (De Cristofori & Jan, 1832)

Synonym(s):

- *Cantareus mazzullii*
- *Helix cephaloeditana*

Taxonomic Notes:

Personal observations by Falkner and Beckmann suggest that the populations are isolated and often exhibit marked morphological differences. These might could indicate that the species is probably polytypic, or even contains cryptic species.

Assessment Information

Red List Category & Criteria: Endangered B2ab(iii) [ver 3.1](#)

Year Published: 2013

Date Assessed: November 12, 2010

Justification:

This species is endemic to the north-western coastal part of Sicily. The distribution area is severely fragmented and the sub-populations live in isolated spots. The area of occupancy is thought to be quite small, and inferred from the available information surely less than 500 km². The sub-populations of this species are threatened by over collection of mature reproducing individuals for alimentary purposes by the local population, and is thus supposed to be declining. In addition, the habitats are threatened by urban development and road construction, uncontrolled wild-fires, pasturing, and fall prey to wild boars. It is therefore assessed as Endangered (EN) under B2a+b(iii).

This species has been raised in its category from Vulnerable A1e+2bd in 2000 to Endangered, because of the ongoing and increasing quality of the threats.

Previously Published Red List Assessments

2000 – Vulnerable (VU)

Geographic Range

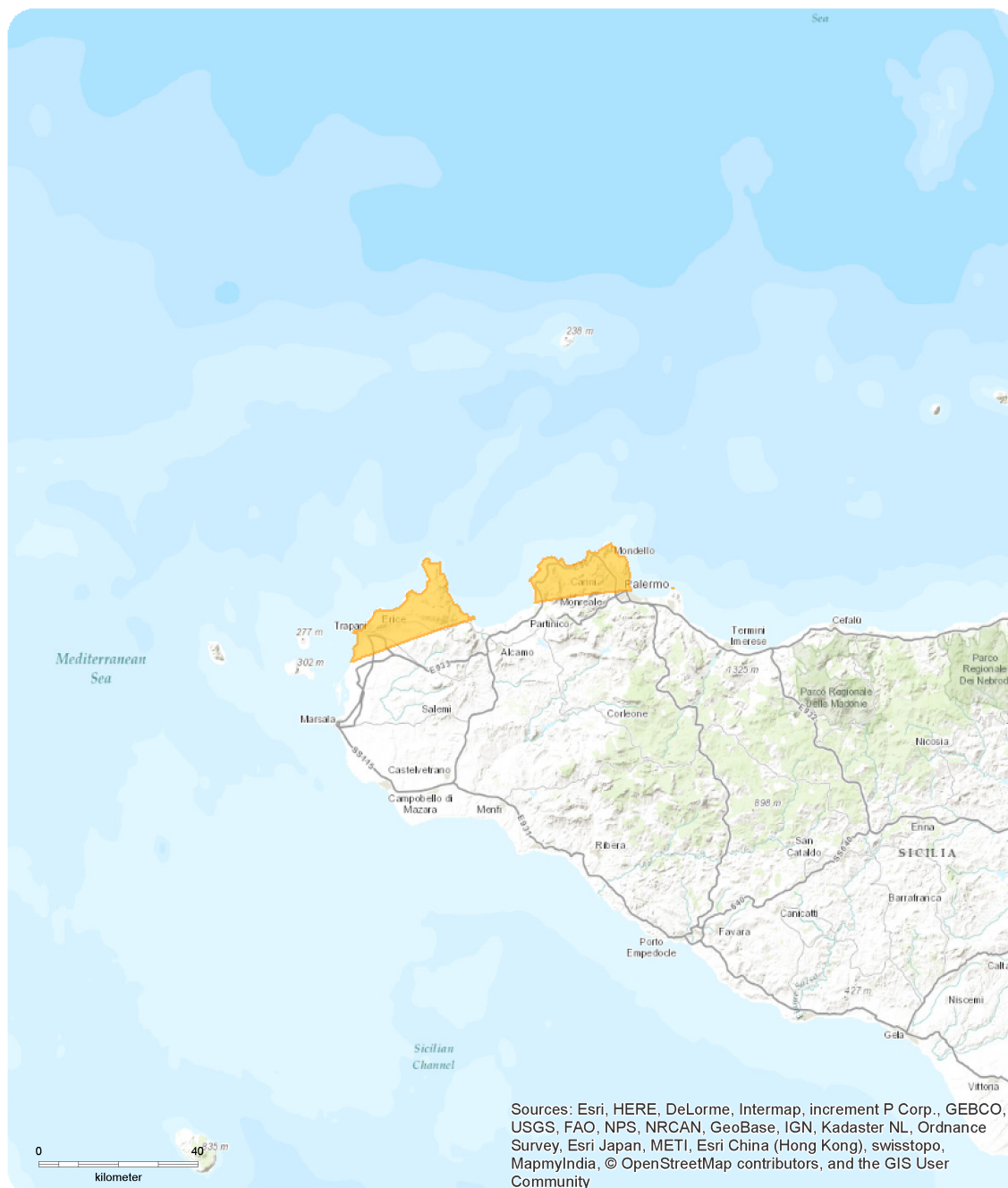
Range Description:

This species is endemic to the north-western coastal part of Sicily. The distribution area is severely fragmented, the sub-populations live in isolated spots. The area of occupancy is thought to be quite small, and inferred from the available information surely less than 500 km².

Country Occurrence:

Native: Italy (Sicilia)

Distribution Map

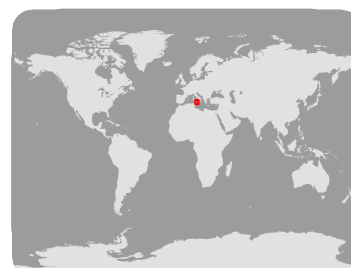


Cornu mazzullii

Range

■ Extant (resident)

Compiled by:
IUCN



The boundaries and names shown and the designations used on this map do not imply any official endorsement, acceptance or opinion by IUCN.



Population

The population size of *Cornu mazzullii* is unknown but is observed to be decreasing.

Current Population Trend: Decreasing

Habitat and Ecology (see Appendix for additional information)

The species is found in crevices amongst calcareous rocks.

Systems: Terrestrial

Use and Trade (see Appendix for additional information)

Individuals are collected by the local population for alimentary purposes.

Threats (see Appendix for additional information)

The main threat to this species is population reduction as a direct result of the collection of individuals for alimentary purposes. Another threat is habitat destruction due to urban development and road construction which directly leads to a serious decline of available habitat. Another threat are uncontrolled wild-fires, which regularly (each year) devastate large areas of the habitats. In some of the places, pasturing also poses a threat, and a large population of wild boars, which feed on the snails.

Conservation Actions (see Appendix for additional information)

No conservation actions are currently in place for this species.

This collection should be managed to halt or reverse the observed decline in the species' population. Manganelli *et al.* (2001) proposed the inclusion of the species into Appendix 1 of CITES. Monitoring of population trends should continue to identify if the current decline of the subpopulations continues.

Credits

Assessor(s): Falkner, G., Falkner, M. & von Proschwitz, T.

Reviewer(s): Ward, J. & Cuttelod, A.

Bibliography

IUCN. 2011. IUCN Red List of Threatened Species (ver. 2011.1). Available at: <http://www.iucnredlist.org>. (Accessed: 16 June 2011).

Citation

Falkner, G., Falkner, M. & von Proschwitz, T. 2013. *Cornu mazzullii*. *The IUCN Red List of Threatened Species 2013*: e.T40099A10307823. <http://dx.doi.org/10.2305/IUCN.UK.2011-1.RLTS.T40099A10307823.en>

Disclaimer

To make use of this information, please check the [Terms of Use](#).

External Resources

For [Images and External Links to Additional Information](#), please see the Red List website.

Appendix

Habitats

(<http://www.iucnredlist.org/technical-documents/classification-schemes>)

Habitat	Season	Suitability	Major Importance?
0. Root -> 6. Rocky areas (eg. inland cliffs, mountain peaks)	-	Suitable	Yes

Use and Trade

(<http://www.iucnredlist.org/technical-documents/classification-schemes>)

End Use	Local	National	International
Food - human	No	Yes	No

Threats

(<http://www.iucnredlist.org/technical-documents/classification-schemes>)

Threat	Timing	Scope	Severity	Impact Score
1. Residential & commercial development -> 1.1. Housing & urban areas	Ongoing	-	-	-
	Stresses:	1. Ecosystem stresses -> 1.1. Ecosystem conversion 1. Ecosystem stresses -> 1.2. Ecosystem degradation 2. Species Stresses -> 2.1. Species mortality		
2. Agriculture & aquaculture -> 2.3. Livestock farming & ranching -> 2.3.4. Scale Unknown/Unrecorded	Ongoing	-	-	-
	Stresses:	1. Ecosystem stresses -> 1.1. Ecosystem conversion 1. Ecosystem stresses -> 1.2. Ecosystem degradation		
5. Biological resource use -> 5.1. Hunting & trapping terrestrial animals -> 5.1.1. Intentional use (species is the target)	Ongoing	-	-	-
	Stresses:	2. Species Stresses -> 2.1. Species mortality		
7. Natural system modifications -> 7.1. Fire & fire suppression -> 7.1.3. Trend Unknown/Unrecorded	Ongoing	-	-	-
	Stresses:	1. Ecosystem stresses -> 1.1. Ecosystem conversion 1. Ecosystem stresses -> 1.2. Ecosystem degradation 2. Species Stresses -> 2.1. Species mortality		

Conservation Actions Needed

(<http://www.iucnredlist.org/technical-documents/classification-schemes>)

Conservation Actions Needed
3. Species management -> 3.1. Species management -> 3.1.1. Harvest management

Conservation Actions Needed
5. Law & policy -> 5.1. Legislation -> 5.1.1. International level

Research Needed

(<http://www.iucnredlist.org/technical-documents/classification-schemes>)

Research Needed
3. Monitoring -> 3.1. Population trends

Additional Data Fields

Distribution
Estimated extent of occurrence (EOO) (km ²): 3250
Population
Population severely fragmented: No
Habitats and Ecology
Continuing decline in area, extent and/or quality of habitat: Yes

The IUCN Red List Partnership



The IUCN Red List of Threatened Species™ is produced and managed by the [IUCN Global Species Programme](#), the [IUCN Species Survival Commission](#) (SSC) and [The IUCN Red List Partnership](#). The IUCN Red List Partners are: [BirdLife International](#); [Botanic Gardens Conservation International](#); [Conservation International](#); [Microsoft](#); [NatureServe](#); [Royal Botanic Gardens, Kew](#); [Sapienza University of Rome](#); [Texas A&M University](#); [Wildscreen](#); and [Zoological Society of London](#).